



Berlin

4 DAYS, 3 NIGHTS – FROM **£574**



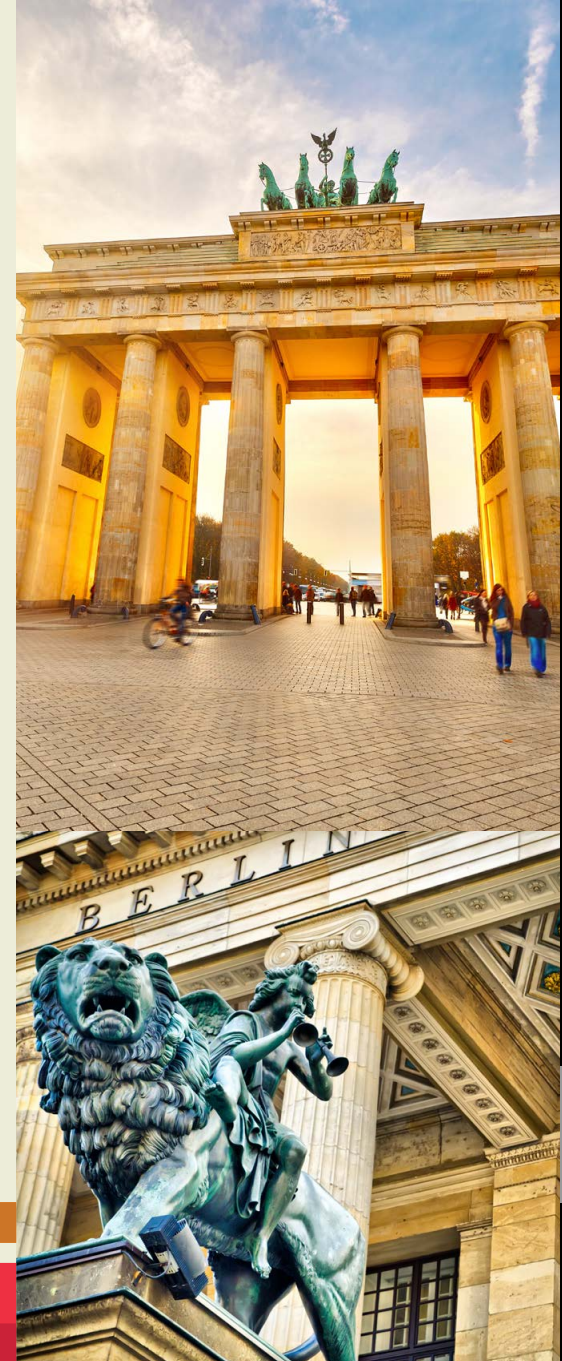
MAKE AN
ENQUIRY

Germany's Capital & Cultural Centre

Visit the fascinating city of Berlin, focus of Germany's history and the nation's capital. Berlin's cultural programme is amazing: three opera houses, over 150 theatres and playhouses, and over 170 museums. There are many historical sites such as the Brandenburg Gate, the symbol of the divided city during the Cold War, and now the focus of a reunified city.

Berlin tells a story of imperial power, the birth and death of regimes, race and persecution and, eventually, a return to stable democracy. With visits to the Reichstag, Brandenburg Gate, Checkpoint Charlie, the Jewish Museum, Sachsenhausen and the Stasi Museum, your students will gain a deeper understanding of the rise of National Socialism, life under the Nazi regime, the Holocaust, the fall of Hitler's Germany and the aftermath of WW2 and the origins of the Cold War.

Our experienced travel advisors will be delighted to provide expert advice and guidance during the organisation of your tour ensuring that your trip is tailored to both you and your groups needs.



ibt



MAKE AN ENQUIRY

Day 1

Morning

Fly from regional airport to Berlin

Transfer using the S-Bahn to your hostel, The Meininger Berlin Hauptbahnhof, for check in.

The hostel is centrally located by the main railway station. Eight bus lines, subways and city trains and countless regional and long-distance railways meet here. This hotel is thus ideally positioned for exploring the whole city.

Afternoon

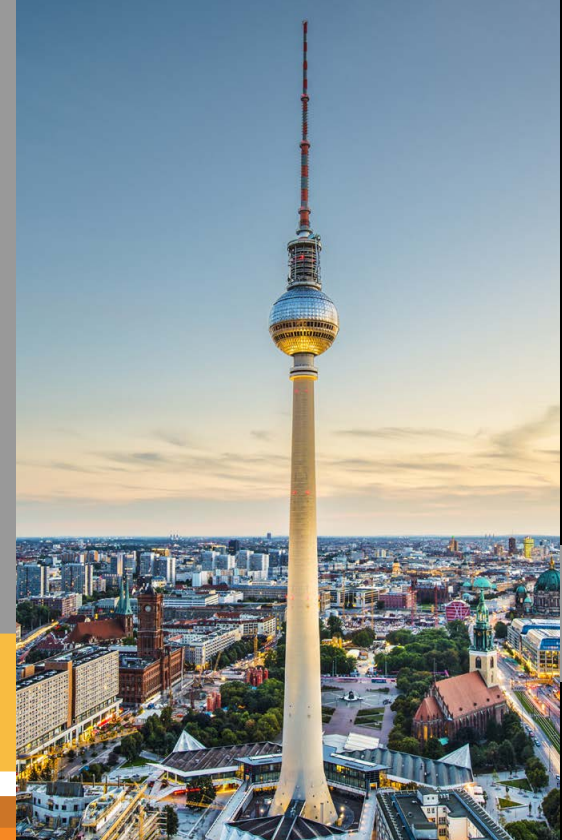
Spend time at leisure exploring Potsdamer Platz area of the city

Potsdamer Platz is an important public square and traffic intersection in the centre of Berlin, Germany, lying about 1 km south of the Brandenburg Gate and the Reichstag (German Parliament Building), and close to the southeast corner of the Tiergarten park.

[/ READ MORE](#) 

Evening

Evening meal back at hostel



ibt



MAKE AN
ENQUIRY

3 / 10

Day 2

Morning

Early breakfast before a full day of sightseeing

The day will begin with a 2 hour guided walking tour with a professional tour guide to share a little of the city's dramatic history and culture.

Afternoon

Afternoon visit to the German Spy Museum

The German Spy Museum is a fascinating exhibit highlighting the history of espionage in Germany from the 16th century to the present day. The museum features interactive displays, authentic spy gadgets including original props from the James Bond films, and a collection of intelligence documents, offering a unique glimpse into the world of spying and counterintelligence.

[/ READ MORE](#) ➔

Evening

Evening meal in Hard Rock Cafe followed by Ten Pin Bowling

Enjoy a game of bowling at the fully refurbished Berolina Bowling Lounge (featuring pool tables, air hockey & amusement machines) before returning to the accommodation.

[/ READ MORE](#) ➔



A PLACE OF
IDEAS
VISION AND
INSPIRATION



Day 3

Morning

Early breakfast before another full day of sightseeing including a visit to the Topography of Terror

The Topography of Terror exhibition sheds some light on the darkest chapter of German history and documents the history of the institutions of terror located in the Nazi government district and much more.

[/ READ MORE](#) ➔

Afternoon

Early afternoon visit to the DDR Museum

The DDR Museum is a unique attraction that highlights the history and culture of the former East Germany. The museum features interactive exhibits, artifacts, and multimedia displays that provide an immersive experience, allowing visitors to explore everyday life in the DDR (Deutsche Demokratische Republik) during the Cold War era.

[/ READ MORE](#) ➔

Late afternoon Boat Trip

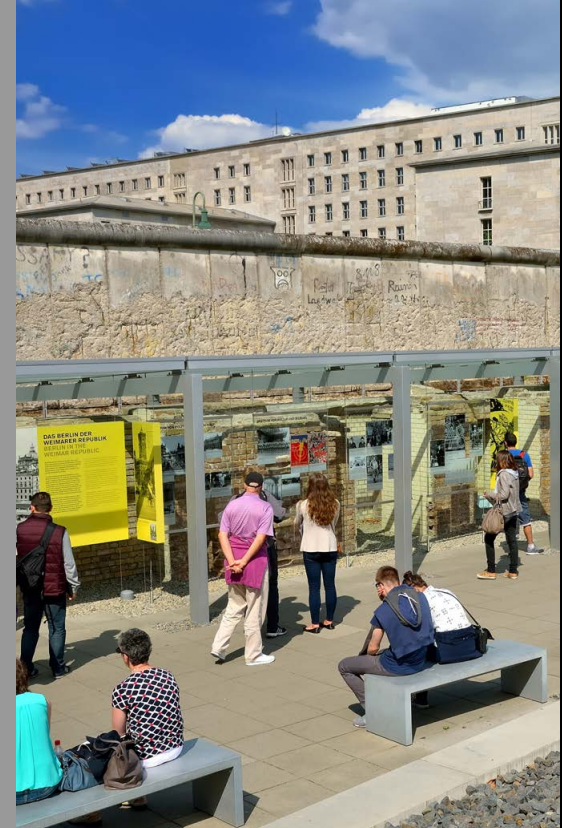
A boat trip along the River Spree leads you alongside various historical places and presents you Berlin from a very special perspective.

Evening

Evening meal in local restaurant, time at leisure in Alexanderplatz

Alexanderplatz is a central square and traffic junction in Berlin's Mitte district. One of city's most visited squares, it is the site of many attractions in Berlin including the TV Tower and famous World Clock.

[/ READ MORE](#) ➔



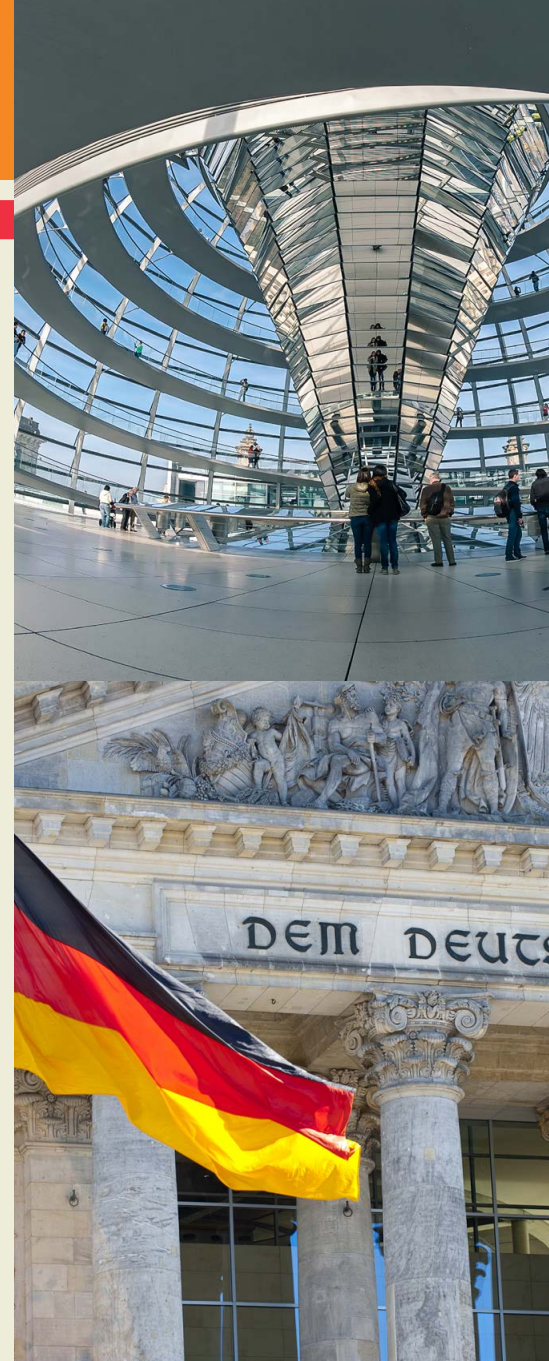
MAKE AN
ENQUIRY

Day 4

**Morning /
Afternoon**

Breakfast in hotel before check out

Travel by S-Bahn back to Berlin Airport for return flight home.



MAKE AN
ENQUIRY



Meininger Berlin Hauptbahnhof

Ella - Trebe - Straße 9, 10557 Berlin

tel. +49 (0) 30 9832 1073 web. www.meininger-hotels.com



HOTEL INFORMATION

There couldn't be a more central location than by the main railway station. Eight bus lines, subways and city trains and countless regional and long-distance railways meet here. This hotel is thus ideally positioned for exploring the whole city. The panorama roof terrace affords spectacular views of Berlin, the Government District and the Tiergarten Park. The Brandenburg Gate is a 10-minute walk away.

LOCATION

Situated in the heart of Berlin, between Berlin Central Station and the Reichstag Parliament

FEATURES

Two lifts, underground car park, free WIFI, free luggage store, lounge, roof terrace and gaming area

BEDROOMS

En-suite bedrooms with flat screen TV

ROOMS

296



MAKE AN ENQUIRY



A&O Hostel Berlin Mitte

Köpernick Str. 127-129, 10179 Berlin

tel. +49 (0) 30 8094 75200 web. aohostels.com



HOTEL INFORMATION

The A&O Berlin Mitte opened in 2004 and was last renovated in the spring of 2011. It is the largest of the A&O Hostels in Berlin. Due to its size the A&O Berlin Mitte is superb for group trips. Only two underground stations away from the Alexanderplatz station and 10 minutes by foot from the Ostbahnhof station, the Berlin Mitte is the ideal starting point for excursions into the metropolis Berlin.

LOCATION

Situated in the centre of Berlin, close to several methods of transport

FEATURES

Hotel bar, internet, washing machine, pool table, TV lounge, Wii lounge, karaoke and car parking

BEDROOMS

En-suite bedrooms suitable for 4, 6 and 8 people

ROOMS

371



ibt



MAKE AN ENQUIRY

9 / 10



Package price is based on a minimum of 40 full paying passengers plus 4 staff free of charge departing in February 2025 from a main UK airport. Regional airport departures may be available depending on routes and availability.

Book now

IBT Travel Ltd

Cairn House, 15 Skye Road, Prestwick KA9 2TA, Scotland
info@ibt-travel.com | www.ibt-travel.com | tel: +44 (0)1292 477 771



Essential Travel Advice

The Foreign, Commonwealth & Development Office issues essential travel advice on destinations, which includes information on passports, visas, health, safety and security and more:

<https://www.gov.uk/government/organisations/foreign-commonwealth-development-office>



MAKE AN ENQUIRY